



**Government of India  
Ministry of Earth Sciences  
India Meteorological Department**



**Press Release**

**Date: 19<sup>th</sup> July, 2025**

**Time of Issue: 1330 hours IST**

**Subject: i) Under the influence of Depression over northwest & adjoining areas of northeast Rajasthan, heavy to very heavy rainfall with isolated extremely heavy falls over southwest Rajasthan and very heavy rainfall over north Gujarat today.**

**ii) Heavy to very heavy rainfall likely to continue over Kerala, Karnataka, Tamil Nadu during next 6-7 days with isolated extremely heavy falls over Kerala and Coastal Karnataka on 19<sup>th</sup> & 20<sup>th</sup> July.**

**Realised weather during past 24 hours till 0830 hours IST of today, the 19<sup>th</sup> July, 2025:**

- ❖ **Heavy to very heavy rainfall at some places with extremely heavy falls ( $\geq 21$  cm)** has been recorded at isolated places over Rajasthan.
- ❖ **Heavy to very heavy rainfall (7-20 cm)** has been recorded at isolated places over Coastal Karnataka, Konkan, Gujarat Region, West Madhya Pradesh, Sub-Himalayan West Bengal; **Heavy rainfall (7-11 cm)** at isolated places over Madhya Maharashtra, Gangetic West Bengal, Odisha, Bihar, Goa, Arunachal Pradesh, Meghalaya, Telangana, Rayalaseema, Tamil Nadu, Interior Karnataka and Kerala.

**For more details of realised weather, kindly refer [Annexure I](#).**

**i. Weather Systems, Forecast and Warnings (refer to Annexure II & III):**

- ❖ The **Monsoon trough** is active and runs near its normal position at mean sea level.
- ❖ Yesterday's Depression over northwest Madhya Pradesh & adjoining Southwest Uttar Pradesh moved west-northwestwards and lay centred at 0830 hrs IST of today, the 19<sup>th</sup> July, 2025, over northwest & adjoining areas of northeast Rajasthan, 50 km west-southwest of Sikar, 90 km south-southwest of Churu. It is likely to move west-northwestwards across northwest Rajasthan and weaken gradually into a well-marked low-pressure area during next 12 hours.
- ❖ A north-south **trough** runs from central parts of north Bihar to Odisha across Jharkhand in lower tropospheric levels.
- ❖ An **east-west trough** runs from south Karnataka to south Coastal Andhra Pradesh in middle tropospheric levels.
- ❖ A fresh **Western Disturbance** as a trough in middle tropospheric levels runs roughly along Long. 70°E to the north of Lat. 32°N.
- ❖ A **Low Pressure area** is likely to form over North Bay of Bengal around 24<sup>th</sup> July, 2025.

Under the influence of these systems, the following weather is likely:

**Northwest India:**

- ✓ **Extremely heavy rainfall ( $\geq 21$  cm)** very likely at isolated places over southwest Rajasthan on 19<sup>th</sup> July.
- ✓ Isolated **heavy rainfall** likely over Jammu & Kashmir, Himachal Pradesh, Uttarakhand during 20<sup>th</sup>-24<sup>th</sup>; West Uttar Pradesh on 20<sup>th</sup> & 21<sup>st</sup>; Punjab, Haryana during 20<sup>th</sup>-22<sup>nd</sup> & 24<sup>th</sup>; southeast Rajasthan on 19<sup>th</sup> July with **very heavy rainfall over Uttarakhand during 20<sup>th</sup>-22<sup>nd</sup>; Punjab, Haryana, West Uttar Pradesh on 21<sup>st</sup> and Himachal Pradesh on 21<sup>st</sup> & 22<sup>nd</sup> and Jammu & Kashmir on 22<sup>nd</sup> July.**
- ✓ Light/moderate rainfall at most/many places accompanied with thunderstorm, lightning likely over western Himalayan region and some/many places over the plains during next 7 days.

**West India:**

- ✓ **Heavy to very heavy rainfall** likely at isolated places over Konkan & Goa, Ghat areas of Madhya Maharashtra during 19<sup>th</sup>-25<sup>th</sup>; north Gujarat on 19<sup>th</sup> July and **heavy rainfall** over Saurashtra & Kutch on 20<sup>th</sup> July.
- ✓ Light/moderate rainfall at many/some places very likely over the region during next 5 days.

**South Peninsular India:**

- ✓ **Extremely heavy rainfall ( $\geq 21$  cm)** very likely at isolated places over Kerala and Coastal Karnataka on 19<sup>th</sup> & 20<sup>th</sup> July.
- ✓ Isolated **heavy to very heavy rainfall** likely over Kerala & Mahe, Coastal and South Interior Karnataka during 19<sup>th</sup>-25<sup>th</sup>; Tamil Nadu during 19<sup>th</sup>-22<sup>nd</sup> July; Coastal Andhra Pradesh & Yanam, Telangana on 21<sup>st</sup> July; isolated **heavy rainfall** over

Coastal Andhra Pradesh & Yanam, north Interior Karnataka, Telangana during 19<sup>th</sup>-25<sup>th</sup>; Lakshadweep and Rayalaseema on 19<sup>th</sup> & 20<sup>th</sup> July.

- ✓ **Strong surface winds** (speed reaching 40-50 kmph) very likely over South Peninsular India during next 5 days.
- ✓ Light/moderate rainfall at many/some places over Kerala & Mahe, Lakshadweep, Karnataka, Rayalaseema; isolated to scattered rainfall over Coastal Andhra Pradesh & Yanam, Telangana during next 7 days.

#### **East & Central India:**

- ✓ Isolated **heavy rainfall** very likely to continue over Madhya Pradesh, Gangetic West Bengal, Jharkhand during 23<sup>rd</sup>-25<sup>th</sup>; Odisha, Chhattisgarh during 19<sup>th</sup> -25<sup>th</sup>; Vidarbha during 21<sup>st</sup>-25<sup>th</sup>; Bihar on 20<sup>th</sup> & 21<sup>st</sup>; Sub-Himalayan West Bengal & Sikkim during 19<sup>th</sup>-22<sup>nd</sup> July **with very heavy rainfall over Sub-Himalayan West Bengal & Sikkim on 19<sup>th</sup> & 20<sup>th</sup>; Gangetic West Bengal on 24<sup>th</sup> and Odisha during 23<sup>rd</sup>-25<sup>th</sup> July.**
- ✓ Light/moderate rainfall at most/many places accompanied with thunderstorm & lightning likely over the region during next 7 days with **moderate cloud to ground lightning over Bihar on 20<sup>th</sup> July.**

#### **Northeast India:**

- ✓ Light/moderate rainfall at many places accompanied with **thunderstorm, lightning** likely to continue over Northeast India during next 7 days.
- ✓ Isolated **heavy rainfall** very likely over Arunachal Pradesh, Assam & Meghalaya, Nagaland & Tripura during 19<sup>th</sup>-21<sup>st</sup> and on 24<sup>th</sup> & 25<sup>th</sup> with **very heavy rainfall** over Arunachal Pradesh on 19<sup>th</sup> July.

#### **Fishermen Warnings:**

Fishermen are advised to avoid venturing into the following from 19<sup>th</sup> July to 24<sup>th</sup> July 2025 to the following Areas:

**Arabian Sea:** Along and off Gujarat coast and adjoining sea area for 23<sup>rd</sup> July; along and off the Kerala, Karnataka coasts, over Lakshadweep, Maldives, Comorin areas for 19<sup>th</sup> to 23<sup>rd</sup> July; Along and off the Somalia coast and adjoining sea areas, south Oman and adjoining Yemen coast & adjoining sea areas; most parts of central Arabian Sea and adjoining, northern parts of south Arabian Sea during 19<sup>th</sup> to 24<sup>th</sup> July; most parts of central Arabian Sea for 19<sup>th</sup> to 20<sup>th</sup> July.

#### **Bay of Bengal:**

South Bay of Bengal along and off Tamil Nadu coast, Gulf of Mannar, over Andaman Sea for 19<sup>th</sup> to 24<sup>th</sup> July; Andhra Pradesh coast for 21<sup>st</sup> to 24<sup>th</sup> July; southern parts of central Bay of Bengal for 20<sup>th</sup> July and most parts of central Bay of Bengal for 21<sup>st</sup> to 24<sup>th</sup> July.

#### **ii. Weather conditions and forecast over Delhi/NCR during 19<sup>th</sup> to 22<sup>nd</sup> July, 2025 (Annexure IV)**

**For more details, kindly refer National Weather Bulletin:**

[https://mausam.imd.gov.in/responsive/all\\_india\\_forecast\\_bulletin.php](https://mausam.imd.gov.in/responsive/all_india_forecast_bulletin.php)

**For District wise warnings refer:** <https://mausam.imd.gov.in/responsive/districtWiseWarningGIS.php>

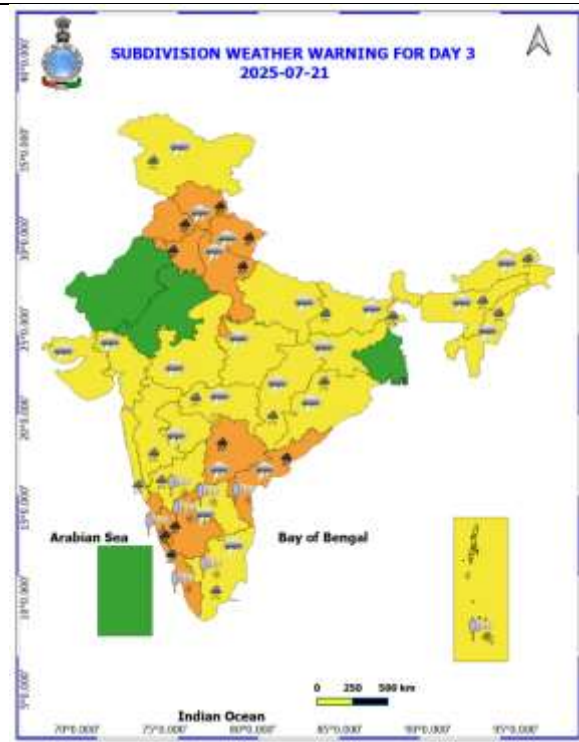
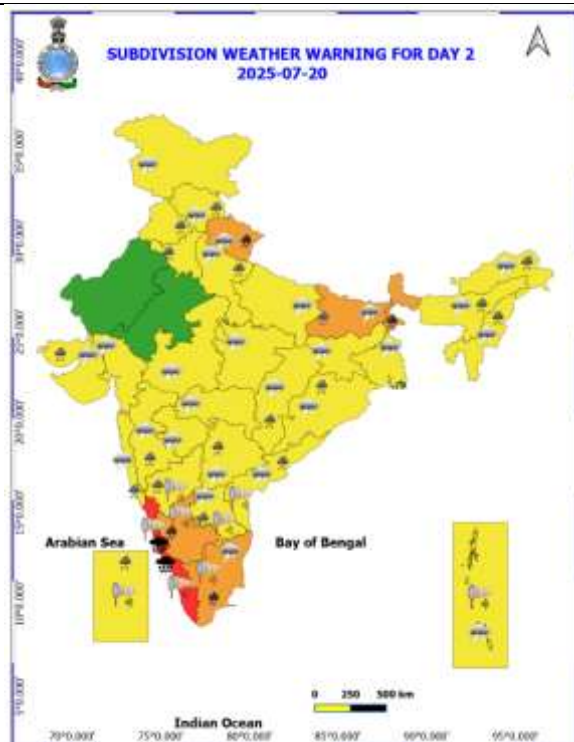
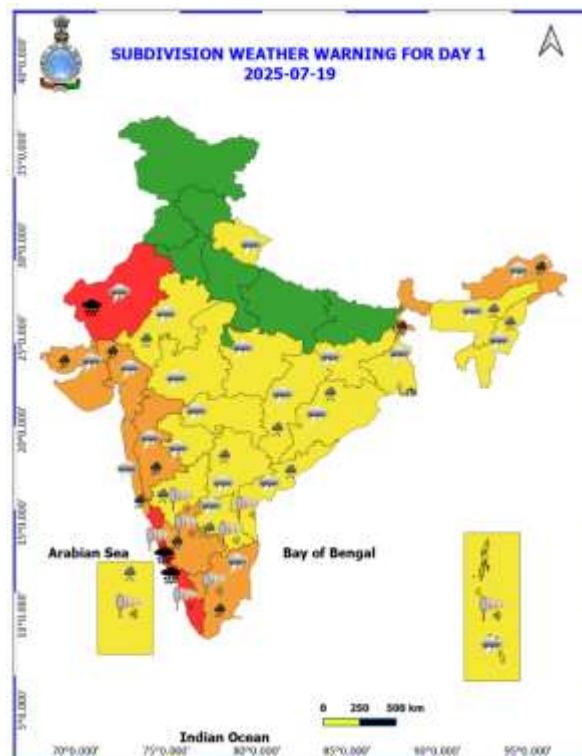
**Rainfall recorded (in cm) during past 24 hours till 0830 hours IST of today, the 19<sup>th</sup> July:**

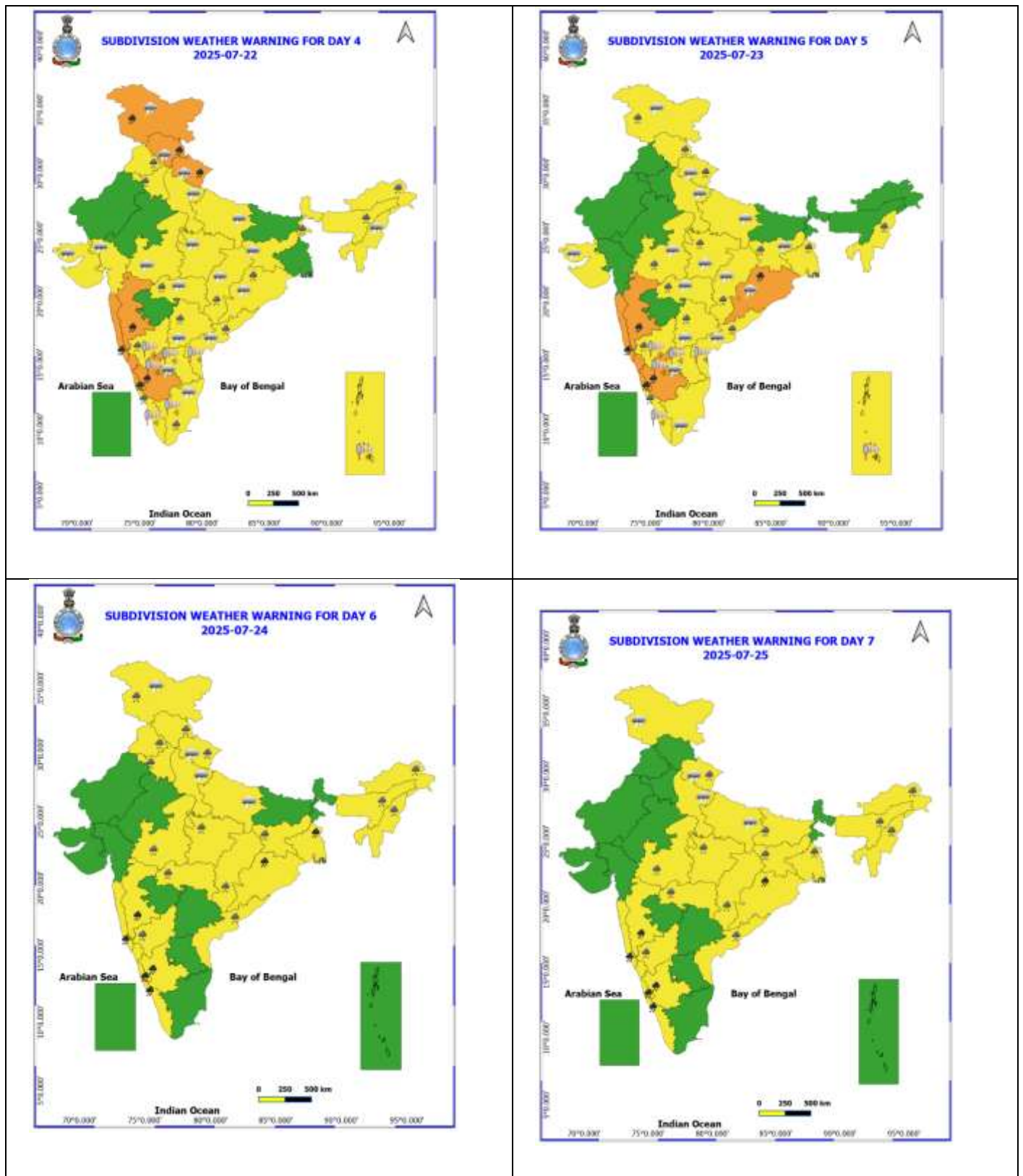
- ❖ **East Rajasthan:** Nainwa (dist Bundi) 23; Mangliawas SR (dist Ajmer), Nasirabad (dist Ajmer) 18 Each; Pratapgarh (dist Pratapgarh) 16; Pisagan SR (dist Ajmer) 15; Kishangarh (dist Ajmer), Sarmathura SR (dist Dholpur), Ajmer (dist Ajmer) 14 Each; Pushkar SR (dist Ajmer), Sarwar (dist Ajmer) 13 Each; Deogarh (dist Rajsamand), Ajmer Tehsil SR (dist Ajmer) 12 Each; Nagrarfort SR (dist Tonk), Masuda SR (dist Ajmer), Geola SR (dist Ajmer), Indergarh SR (dist Bundi) 11 Each; Lalsot (dist Dausa), Bhinay SR (dist Ajmer), Arai SR (dist Ajmer), Kekri SR (dist Ajmer), Malerainadunger SR (dist Sawai Madhopur) 10 Each; Tonk Vanasthali (dist Tonk), Tatgarh SR (dist Ajmer), Kumbhalgarh SR (dist Rajsamand), Gegal SR (dist Ajmer), Khandar SR (dist Sawai Madhopur), Pipalda SR (dist Kota), Bamanwas SR (dist Sawai Madhopur) 9 Each; Nayanagar/Beawar (dist Ajmer), Hurda SR (dist Bhilwara), Todaraisingh SR (dist Tonk), Jawaja (dist Ajmer), Raipur (dist Bhilwara), Dausa (dist Dausa), Sawaimadhopur Tesil SR (dist Sawai Madhopur) 8 Each; Chothkabarwara SR (dist Sawai Madhopur), Uniara/aligarh (dist Tonk), Vijaynagar SR (dist Ajmer), Sallopat SR (dist Banswara), Mandana SR (dist Kota), Sapotra (dist Karauli), Jhadol SR (dist Udaipur), Mandrayal SR (dist Karauli), Gangapur (dist Sawai Madhopur), Bhim (dist Rajsamand), Nimbahera (dist Chittorgarh), Piplu SR (dist Tonk) 7 Each;
- ❖ **West Rajasthan:** Merta City (dist Nagaur) 23; Raipur SR (dist Pali) 14; Khivensar SR (dist Nagaur) 13; Degana (dist Nagaur) 11; Bhopalgarh SR (dist Jodhpur) 10; Bilara (dist Jodhpur), Sojat (dist Pali), Marwar Junction (dist Pali), Luni SR (dist Jodhpur) 9 Each; Pali (dist Pali) 8; Shergarh (dist Jodhpur), Jodhpur Tehsil SR (dist Jodhpur), Pachpadra (dist Barmer), Jaitran (dist Pali), Rohat SR (dist Pali) 7 Each;
- ❖ **Sub Himalayan West Bengal:** Buxaduar (dist Alipurduar) 19; Chengmari/Diana (dist Jalpaiguri), Diana Tea Estate (dist Jalpaiguri) 16 Each; Fagu Tea Estate (dist Jalpaiguri) 15; Palashbari Tea Estate (dist Jalpaiguri) 14; Banarhat High School (dist Jalpaiguri), Chalouni Tea Estate (dist Jalpaiguri), Karballa Tea Estate (dist Jalpaiguri) 11 Each; Gandrapara Tea Garden (dist Jalpaiguri) 10; Indong T.e. (dist Jalpaiguri), Zurrantee T.e (dist Jalpaiguri) 9 Each; Bhagatpur Tea Estate (dist Jalpaiguri), Ghatia T.e. (dist Jalpaiguri), Ghish (dist Jalpaiguri), Tra Nagrakata (dist Jalpaiguri), Washabari Tea Estate (dist Jalpaiguri), Nagarkata (dist Jalpaiguri), Toorsa Tea Garden (dist Alipurduar) 8 Each; Chel (dist Jalpaiguri), Kurti T.e. (dist Jalpaiguri), Maynaguri College (dist Jalpaiguri), Beech Tea Garden (dist Alipurduar) 7 Each;
- ❖ **Konkan & Goa:** Malvan (dist Sindhudurg) 14; Sanguem (dist South Goa) 9;
- ❖ **Coastal Karnataka:** Shirali PTO (dist Uttara Kannada) 12; Kumta (dist Uttara Kannada) 11; Manki (dist Uttara Kannada), Gersoppa (dist Uttara Kannada) 10 Each; Mangaluru AP (dist Dakshina Kannada), Shakti Nagar (dist Dakshina Kannada), Honavar (dist Uttara Kannada) 8 Each;
- ❖ **As per state government data, maximum observed rainfall is over** Kumta (dist Uttara Kannada) 14.
- ❖ **Gujarat Region:** Danta (dist Banaskantha) 12; Palanpur (dist Banaskantha) 9;
- ❖ **West Madhya Pradesh:** Bairad (dist Shivpuri) 11; Karhal (dist Sheopur) 10; Badoda (dist Sheopur) 9; Narwar (dist Shivpuri), Kumbhraj (dist Guna) 8 Each; Mandsaur-aws (dist Mandsaur), Alipur(jaura) (dist Morena), Jawad (dist Neemuch), Veerpur (dist Sheopur) 7 Each;
- ❖ **Arunachal Pradesh:** Oyan ARG (dist East Siang) 11; Miao (dist Changlang) 8;
- ❖ **Madhya Maharashtra:** Gaganbawada (dist Kolhapur) 11;
- ❖ **Telangana:** Nawabpet (dist Vikarabad), Chevella (dist Rangareddy), Husnabad(ARG) (dist Siddipet), Yadagirigutta (dist Y. Bhuvanagiri) 10 Each; Nanganur (dist Siddipet), Yadagirigutta(ARG) (dist Y. Bhuvanagiri) 9 Each; Medak (dist Medak), Himayatnagar (dist Hyderabad), Ramayampet (dist Medak) 8 Each; Shekpet (dist Hyderabad) 7;
- ❖ **North Interior Karnataka:** Chincholi (dist Kalaburgi), Kurdi (dist Raichur), Gadag PBO (dist Gadag) 8 Each; Vijayapura PTO (dist Vijayapura) 7;
- ❖ **Kerala:** Kollam Rly (dist Kollam), Chavara AWS (dist Kollam) 8 Each; Thodupuzha (dist Idukki), Udumbannoor AWS (dist Idukki) 7 Each;
- ❖ **Bihar:** Birpur (dist Supaul) 7;
- ❖ **Rayalaseema:** Royachoti (dist Annamayya District) 7;
- ❖ **Tamil Nadu:** Tiruvallur (dist Tiruvallur), Arakonam (dist Ranipet) 7 Each;
- ❖ **Odisha:** Bargarh (dist Bargarh) 7;
- ❖ **South Interior Karnataka:** Agumbe AWS (dist Shivamogga) 7;
- ❖ **Gangetic West Bengal:** Rajnagar (dist Birbhum) 7.

Table-1								
7 Days Rainfall Forecast								
S.No.	Subdivision	19- Jul	20- Jul	21- Jul	22- Jul	23- Jul	24- Jul	25- Jul
		Day 1	Day 2	Day 3	Day 4	Day 5	Day 6	Day 7
1	ANDAMAN & NICOBAR ISLANDS	WS	WS	FWS	FWS	FWS	FWS	FWS
2	ARUNACHAL PRADESH	WS	FWS	FWS	FWS	SCT	SCT	FWS
3	ASSAM & MEHGHALAYA	FWS	FWS	SCT	SCT	SCT	SCT	SCT
4	NAGALAND, MANIPUR, MIZORAM AND TRIPURA	FWS	FWS	SCT	SCT	FWS	SCT	SCT
5	SUB HIMALAYAN WEST BENGAL & SIKKIM	WS	WS	WS	WS	FWS	FWS	FWS
6	GANGETIC WEST BENGAL	FWS	FWS	SCT	SCT	FWS	WS	WS
7	ODISHA	FWS	FWS	SCT	FWS	WS	WS	WS
8	JHARKHAND	SCT	SCT	SCT	SCT	FWS	FWS	WS
9	BIHAR	ISOL	SCT	SCT	ISOL	ISOL	SCT	SCT
10	EAST UTTAR PRADESH	ISOL	SCT	SCT	ISOL	ISOL	SCT	FWS
11	WEST UTTAR PRADESH	ISOL	SCT	FWS	SCT	SCT	SCT	SCT
12	UTTARAKHAND	SCT	WS	WS	WS	FWS	FWS	FWS
13	HARYANA, CHANDIGARH & DELHI	ISOL	SCT	WS	WS	SCT	SCT	SCT
14	PUNJAB	ISOL	SCT	WS	WS	SCT	SCT	SCT
15	HIMACHAL PRADESH	SCT	FWS	WS	WS	WS	FWS	FWS
16	JAMMU AND KASHMIR AND LADAKH	SCT	SCT	WS	WS	WS	WS	SCT
17	WEST RAJASTHAN	WS	SCT	ISOL	ISOL	ISOL	ISOL	ISOL
18	EAST RAJASTHAN	FWS	ISOL	SCT	SCT	ISOL	ISOL	ISOL
19	WEST MADHYA PRADESH	ISOL	ISOL	SCT	FWS	FWS	FWS	FWS
20	EAST MADHYA PRADESH	ISOL	SCT	FWS	FWS	FWS	FWS	FWS
21	GUJRAT REGION	FWS	SCT	SCT	SCT	SCT	SCT	SCT
22	SAURASHTRA & KUTCH	FWS	SCT	SCT	SCT	SCT	SCT	SCT
23	KONKAN & GOA	FWS	FWS	WS	WS	WS	WS	WS
24	MADHYA MAHARASHTRA	SCT	SCT	FWS	FWS	WS	WS	WS
25	MARATHWADA	ISOL	ISOL	SCT	ISOL	ISOL	ISOL	ISOL
26	VIDARBHA	SCT	FWS	FWS	WS	WS	WS	WS
27	CHHATTISGARH	SCT	SCT	FWS	WS	WS	WS	WS
28	COASTAL ANDHRA PRADESH	FWS	FWS	FWS	FWS	FWS	SCT	SCT
29	TELANGANA	FWS	FWS	WS	WS	WS	WS	WS
30	RAYALASEEMA	FWS	FWS	FWS	FWS	SCT	SCT	SCT
31	TAMILNADU & PUDUCHERRY	SCT	SCT	SCT	SCT	ISOL	ISOL	ISOL
32	COSTAL KARNATAKA	WS	WS	WS	WS	WS	WS	WS
33	NORTH INTERIOR KARNATAKA	FWS	FWS	WS	WS	WS	WS	WS
34	SOUTH INTERIOR KARNATAKA	WS	WS	WS	WS	WS	WS	WS
35	KERALA AND MAHE	WS	WS	WS	WS	WS	WS	WS
36	LAKSHADWEEP	WS	WS	WS	WS	WS	WS	WS

- As the lead period increases forecast accuracy decrease.







- Action may be taken based on ORANGE AND REDCOLOUR warnings.
- Vulnerable regions likely urban and hilly areas action may be initiated for heavy rainfall warning.
- As the lead period increases forecast accuracy decreases.

Detailed districtwise Multi Hazard weather warning for next five days available at <https://mausam.imd.gov.in/responsive/districtWiseWarningGIS.php>

**Weather forecast over Delhi/NCR during 19<sup>th</sup> to 22<sup>th</sup> July 2025****Past Weather:**

There has been rise in the minimum temperature up to 1 to 2°C and no significance changes in maximum temperature over Delhi/NCR during the past 24 hours. The maximum and minimum temperatures over Delhi were around 32 to 34°C and 24 to 26°C respectively. The minimum temperature was below normal up to 1 to 2°C and the maximum temperature was below normal up to 1 to 2°C. Generally cloudy sky conditions with predominant surface wind from the northeast direction with wind speeds up to 20 kmph with gusting wind 35 kmph prevailed during the past 24 hours. Very light to light rainfall has been recorded in most places over Delhi. Partly cloudy sky conditions with a windspeed of less than 18 kmph from the southeast direction prevailed over the region in the forenoon today.

**Weather Forecast:**

**19.07.2025:** Partly cloudy sky. Very light to light rain accompanied with thunderstorms/lightning. Occasionally strong surface winds 20 - 30 kmph. The maximum temperatures over Delhi are likely to be in the range of 34 to 36°C. The maximum temperature will be near normal. The predominant surface wind will likely be from the southeast direction with a wind speed of less than 15 kmph in the afternoon. The wind speed will gradually decrease becoming 10-15 kmph from the southwest direction during evening and night.

**20.07.2025:** Partly cloudy sky. Very light rain. The maximum and minimum temperatures over Delhi are likely to be in the range of 35 to 37°C and 25 to 27°C respectively. The minimum temperature will be below normal up to 1 to 2°C, and the maximum temperature will be above normal up to 1 to 2°C. The predominant surface wind will likely be from the southwest direction with a wind speed of less than 12 kmph during the morning hours. The wind speed will gradually increase becoming less than 16 kmph from the west direction in the afternoon. It will decrease becoming less than 12 kmph from the west direction during the evening and night.

**21.07.2025:** Generally cloudy sky. Very light to light rain accompanied with thunderstorms/lightning. The maximum and minimum temperatures over Delhi are likely to be in the range of 32 to 34°C and 26 to 28°C respectively. The minimum temperature will be near normal and the maximum temperature will be below normal up to 1 to 2°C. The predominant surface wind will likely be from the southwest direction with a wind speed of less than 25 kmph during the morning hours. The wind speed will gradually decrease becoming less than 15 kmph from the south direction in the afternoon. It will increase becoming less than 18 kmph from the southwest direction during the evening and night.

**22.07.2025:** Generally cloudy sky. Very light to light rain accompanied with thunderstorms/lightning. The maximum and minimum temperatures over Delhi are likely to be in the range of 31 to 33°C and 24 to 26°C respectively. The minimum temperature will be below normal up to 1 to 2°C and the maximum temperature will be below normal up to 1 to 3°C. The predominant surface wind will likely be from the southwest direction with a wind speed of less than 10 kmph during the morning hours. The wind speed will gradually increase becoming less than 15 kmph from the west direction in the afternoon. It will decrease becoming less than 10 kmph from the west direction during the evening and night.

**Impact expected and Action Suggested due to light rainfall with thunderstorm/lightning:**

- Be cautious and take precautionary measures, though there is the likelihood of thunderstorms/lightning.
- Damage to standing crops, Minor to major damage to power and communication lines due to breaking of branches, Partial damage to vulnerable structures due to strong winds, Loose objects may fly.
- People are advised to keep a watch on the weather for worsening conditions and be ready to move to safer places accordingly, stay indoors, close windows & doors and avoid travel if possible, take safe shelters; do not take shelter under trees, do not lie on concrete floors and do not lean against concrete walls, unplug electrical/ electronic appliances, immediately get out of water bodies, keep away from all the objects that conduct electricity.

### Impact & Action Suggested

- ✓ **Extremely heavy rainfall ( $\geq 21$  cm)** very likely at isolated places over southwest Rajasthan on 19<sup>th</sup>; Kerala and Coastal Karnataka on 19<sup>th</sup> & 20<sup>th</sup> July.
- ✓ **very heavy rainfall over** Kerala & Mahe, Coastal and South Interior Karnataka, Konkan & Goa, Ghat areas of Madhya Maharashtra during 19<sup>th</sup>-25<sup>th</sup>; Tamil Nadu during 19<sup>th</sup>-22<sup>nd</sup>; Uttarakhand during 20<sup>th</sup>-22<sup>nd</sup>; Punjab, Haryana, West Uttar Pradesh, Coastal Andhra Pradesh & Yanam, Telangana on 21<sup>st</sup>; Himachal Pradesh on 21<sup>st</sup> & 22<sup>nd</sup>; Jammu & Kashmir on 22<sup>nd</sup>; Sub-Himalayan West Bengal & Sikkim on 19<sup>th</sup> & 20<sup>th</sup>; Gangetic West Bengal on 24<sup>th</sup> and Odisha during 23<sup>rd</sup>-25<sup>th</sup> July.

### Impact Expected

- Localized Flooding of roads, water logging in low lying areas and closure of underpasses mainly in urban areas of **(Rajasthan and West Madhya Pradesh)** the above region.
- Occasional reduction in visibility due to heavy rainfall.
- Disruption of traffic in major cities due to water logging in roads leading to increased travel time.
- Minor damage to kutch roads.
- Possibilities of damage to vulnerable structure.
- Localized Landslides/Mudslides/landslips/mudslips/landsinks/mudsinks.
- Damage to horticulture and standing crops in some areas due to inundation.
- It may lead to riverine flooding in some river catchments (for riverine flooding please visit Web page of CWC)

### Action Suggested

- Check for traffic congestion on your route before leaving for your destination.
- Follow any traffic advisories that are issued in this regard.
- Avoid going to areas that face the water logging problems often.
- Avoid staying in vulnerable structure.

### Agromet advisories for likely impact of Heavy / Heavy to Very Heavy Rainfall

- In **Rajasthan**, postpone sowing of *kharif* crops and make arrangement for drainage in already sown green gram, sesame, moth bean, cluster bean and pearl millet crops in **Arid Western Plain Zone**. Make arrangement to drain out excess water from the fields of already sown sugarcane, banana, rice, maize, cotton, soybean, and groundnut fields in **Sub Humid Southern Plain and Aravali Hill Zone**. Ensure proper drainage facilities to remove excess water from fields of already sown crops of sorghum, maize, mung bean, cluster bean, cowpea, moth bean, and pearl millet in **Semi Arid Eastern Plain Zone**.
- In **Uttarakhand**, maintain proper drainage channels in rice field in **Bhabar and Tarai Zone**. Maintain proper drainage channels in black gram in **Hill Zone**. Make necessary arrangements to drain out excess water from barnyard millet, finger millet, cucumber and rice fields in **Sub Humid SubTropic Zone**.
- In **Himachal Pradesh**, make proper drainage channels in the standing crops like maize, finger millet and vegetable fields. Provide staking to tall and leguminous crops and cucumber vines. In **Mid Hills Sub Humid Zone**, undertake harvesting of matured tomato, brinjal, capsicum and fruits and keep the harvested produce at safer places.
- In **Arunachal Pradesh**, keep the harvested soybean crop at safer places. Postpone sowing / transplanting of millet and transplanting of rice during heavy rainfall. Maintain drainage in already sown / transplanted finger millet, orchards, vegetables and transplanted rice. Cover the nursery bed of millet with plastic sheet or shed, and cover the surface of already sown seed with light layer of natural mulches like leaves.
- In **Meghalaya**, maintain proper drainage channels around the nursery beds of rice. Ensure adequate drainage in maize, cow pea, okra, brinjal and pumpkin crop fields to prevent waterlogging. Provide support to banana plant to prevent lodging.
- In **Sub-Himalayan West Bengal**, maintain proper drainage in *kharif* rice, jute and vegetables in **Terai Zone**. Maintain proper drainage channels to remove excess water from the rice fields, ginger, vegetables and fruit orchards in **Hill Zone**.
- In **Tamilnadu**, provide drainage in rice nursery and recently transplanted rice fields in **Western Zone**; sorghum, sugarcane, maize, rice, banana and coconut fields in **Southern Zone** and standing crops in **High altitude Hilly Zone**. Provide support to banana plants in **Cauvery Delta Zone**.
- In **Kerala**, provide mechanical support to protect banana plants. Ensure proper drainage facilities in banana, coconut and rice in **Central Zone**; banana, coconut, ginger and vegetable fields in **Southern Zone** and rice nursery in **High Altitude Zone**. In **Northern Zone**, postpone sowing / nursery preparation for transplanting of rice.
- **Karnataka** - In **Coastal Zone**, postpone nursery sowing of rice and provide drainage in arecanut fields and banana orchards. In **Hill Zone**, make arrangements to drain out excess water from rice nurseries, fields of maize, cotton, ginger and plantations of arecanut. In **Southern Transition Zone**, provide proper drainage in arecanut and coconut fields. Cover young seedlings in rice nursery and vegetables with coverings like plastic sheets or agro-shade nets. Postpone transplanting of rice. In **Southern Dry Zone**, provide staking / support to maize, tomato and banana crop. Ensure proper drainage to prevent waterlogging especially in rice, vegetables and spice crops. Cover young rice seedlings with plastic sheets or agro-shade nets and postpone transplanting.
- In **Konkan**, make arrangement to drain out excess water from rice and finger millet nurseries, groundnut, vegetables and orchards. In **ghat areas of Madhya Maharashtra** drain out excess water from rice and finger millet nurseries. In **Chhattisgarh**, make arrangements for drainage of excess water from fields of rice, maize, pigeon pea, minor millets and vegetables. Provide mechanical support to tall/weak crops with stakes or bamboo to prevent lodging or breakage.



### Livestock / Fishery

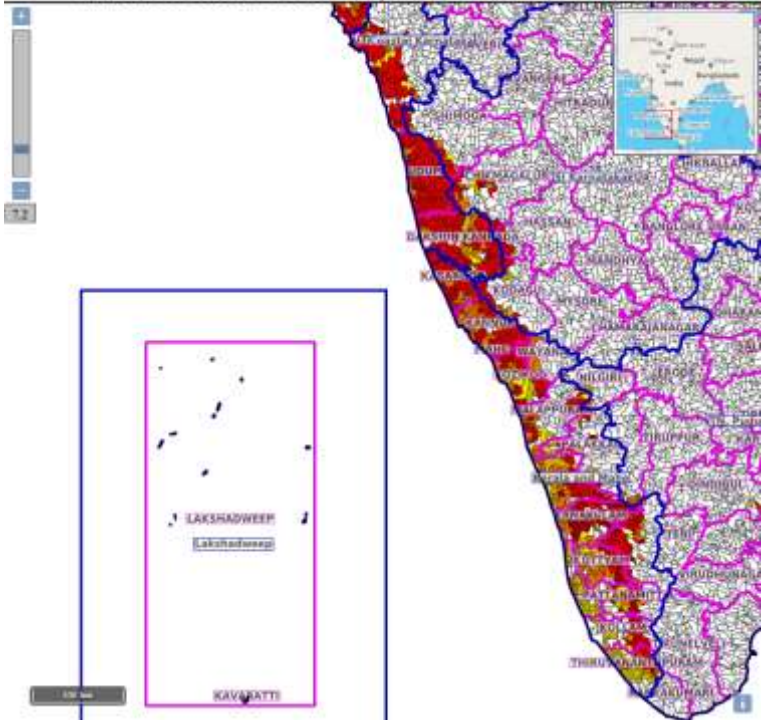
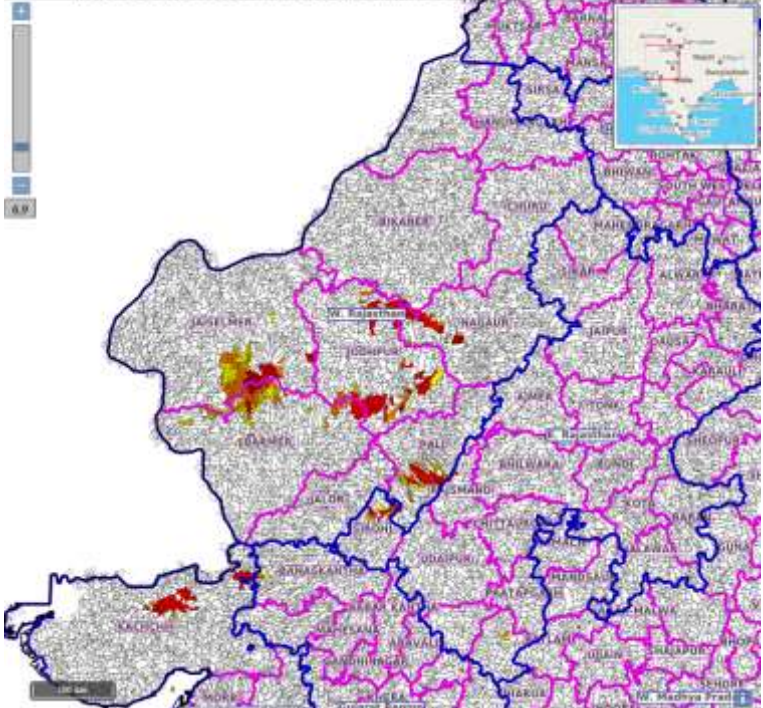
- Keep the animals inside the shed during heavy rainfall and provide them balanced feed.
- Store feed and fodder in a safe place to prevent spoilage.
- Construct an outlet with proper netting around the ponds to drain out excess water, thereby preventing fish from escaping in case of overflow.

### Agromet advisories for likely impact of Thunderstorm / Gusty Winds / Squally Winds

(Based on the IBF and advisories issued by different AMFUs)

- Provide mechanical support to horticultural crops and staking or support to vegetables and young fruit plants / fruit-bearing plants to avoid lodging due to strong winds.

### Flash flood guidance:

<p>24 hours Outlook for the Flash Flood Risk (FFR) till 1130 IST of 20-07-2025:</p> <p>Low to Moderate flash flood risk likely over few watersheds &amp; neighbourhoods of following Met Sub-divisions during next 24 hours.</p> <p>Coastal Karnataka - Dakshin Kannada, Udupi and Uttar Kannada districts. Kerala &amp; Mahe – Alappuzha, Ernakulam, Idukki, Kannur, Kasargod, Kottayam, Kozikod, Mahe, Malappuram, Palakkad, Pattanamitta, Trishur, Thiruvananthapuram and Wayanad districts.</p> <p>Surface runoff/ Inundation may occur at some fully saturated soils &amp; low-lying areas over Area of Concern (AoC) as shown in map due to expected rainfall occurrence in next 24 hours.</p>	<p>Product: WRF FFR   Timescale: 24-hr   Region: "REGIONAL"</p> <p>Product Date: 2025-07-19 06:00 UTC   Valid Date: 2025-07-20 06:00 UTC</p> 
<p>24 hours Outlook for the Flash Flood Risk (FFR) till 1130 IST of 20-07-2025 :</p> <p>Low to Moderate flash flood risk likely over few watersheds &amp; neighbourhoods of following Met Sub-divisions during next 24 hours.</p> <p>East Rajasthan –Sirohi and Rajsamand districts. West Rajasthan –Barmer, Pali, Nagaur, Jodhpur and Jaisalmer districts. Gujarat Region – Banaskantha district, Saurashtra &amp; Kutch - Kutch district .</p> <p>Surface runoff/ Inundation may occur at some fully saturated soils &amp; low-lying areas over Area of Concern (AoC) as shown in map due to expected rainfall occurrence in next 24 hours.</p>	<p>Product: NCUM FFR   Timescale: 24-hr   Region: "REGIONAL"</p> <p>Product Date: 2025-07-19 06:00 UTC   Valid Date: 2025-07-20 06:00 UTC</p> 

## Legends & abbreviations:

- ❖ **Heavy Rain:**64.5-115.5mm; **Very Heavy Rain:**115.6-204.4mm; **Extremely Heavy Rain:** >204.4mm.
- ❖ **Obsy:** Observatory; Automatic Weather Station; **ARG:** Automatic Rain Gauge; **dist:** District; **NH:** National Highway; **KVK:** Krishi Vigyan Kendra; **DVC:** Damodar Valley Corporation; **PTO:** Part Time Office, **Aero:** Aerodrome, **IAF:** Indian Air Force.
- ❖ **Region wise classification of meteorological Sub-Divisions:**
  - **Northwest India:** Western Himalayan Region (Jammu-Kashmir-Ladakh-Gilgit-Baltistan-Muzaffarabad, Himachal Pradesh and Uttarakhand); Punjab, Haryana-Chandigarh-Delhi; West Uttar Pradesh, East Uttar Pradesh, West Rajasthan and East Rajasthan.
  - **Central India:** West Madhya Pradesh, East Madhya Pradesh, Vidarbha and Chhattisgarh.
  - **East India:** Bihar, Jharkhand, Sub-Himalayan West Bengal & Sikkim; Gangetic West Bengal, Odisha and Andaman & Nicobar Islands.
  - **Northeast India:** Arunachal Pradesh, Assam & Meghalaya and Nagaland, Manipur, Mizoram & Tripura.
  - **West India:** Gujarat Region, Saurashtra & Kutch, Konkan & Goa, Madhya Maharashtra and Marathawada.
  - **South India:** Coastal Andhra Pradesh & Yanam, Telangana, Rayalaseema, Coastal Karnataka, North Interior Karnataka, South Interior Karnataka, Kerala & Mahe, Tamil Nadu, Puducherry & Karaikal and Lakshadweep.



## LEGENDS

1. अंडमान और निकोबार द्वीपसमूह

2. अरुणाचल प्रदेश

3. असम और मेघालय

4. नागालैंड, मणिपुर, मिजोरम और त्रिपुरा

5. उप-हिमालयी पश्चिम बंगाल और सिक्किम

6. गंगीय पश्चिम बंगाल

7. ओडिशा

8. झारखंड

9. बिहार

10. पूर्वी उत्तर प्रदेश

11. पश्चिम उत्तर प्रदेश

12. उत्तराखंड

13. हरियाणा, चंडीगढ़ और दिल्ली

14. पंजाब

15. हिमाचल प्रदेश

16. जम्मू और कश्मीर और लद्दाख

17. पश्चिम राजस्थान

18. पूर्वी राजस्थान

19. पश्चिम मध्य प्रदेश

20. पूर्वी मध्य प्रदेश

21. गुजरात

22. सौराष्ट्र

23. कोंकण और गोवा

24. मध्य महाराष्ट्र

25. मराठवाड़ा

26. विदर्भ

27. छत्तीसगढ़

28. तटीय आंध्र प्रदेश और यनम

29. तेलंगाना

30. रायलसीमा

31. तमिलनाडु, पुडुचेरी और कराईकल

32. तटीय कर्नाटक

33. आंतरिक उत्तरी कर्नाटक

34. आंतरिक दक्षिणी कर्नाटक

35. केरल और माहे

36. लक्षद्वीप



1. Andaman & Nicobar Islands

2. Arunachal Pradesh

3. Assam & Meghalaya

4. Nagaland, Manipur, Mizoram & Tripura

5. Sub-Himalayan West Bengal & Sikkim

6. Gangetic West Bengal

7. Odisha

8. Jharkhand

9. Bihar

10. East Uttar Pradesh

11. West Uttar Pradesh

12. Uttarakhand

13. Haryana, Chandigarh & Delhi

14. Punjab

15. Himachal Pradesh

16. Jammu & Kashmir and Ladakh

17. West Rajasthan

18. East Rajasthan

19. West Madhya Pradesh

20. East Madhya Pradesh

21. Gujarat

22. Saurashtra

23. Konkan & Goa

24. Madhya Maharashtra

25. Marathwada

26. Vidarbha

27. Chhattisgarh

28. Coastal Andhra Pradesh & Yanam

29. Telangana

30. Rayalaseema

31. Tamilnadu, Puducherry & Karaikal

32. Coastal Karnataka

33. North Interior Karnataka

34. South Interior Karnataka

35. Kerala & Mahe

36. Lakshadweep

## SPATIAL DISTRIBUTION (% of Stations reporting)

% Stations	Category	% Stations	Category
76-100	Widespread (WS/Most Places)	26-50	Scattered (SCT/A Few Places)
51-75	Fairly Widespread (FWS/Many Places)	1-25	Isolated (ISOL)



Fog



Heavy Rain



Very Heavy Rain



Extremely Heavy Rain



Thunder & Lightning



Hailstorm



Dust Raising Winds



Heavy Snow



Dust Storm



Heat Wave



Warm Night



Hot Day



Hot & Humid



Strong Surface Winds



Cold Wave



Cold Day



Ground Frost

### COLOUR CODED WARNING

No Warning (No Action)

Watch (Be Aware)

Alert (Be Prepared To Take Action)

Warning (Take Action)

### Probabilistic Forecast

Terms	Probability of Occurrence (%)
Unlikely	< 25
Likely	25 - 50
Very Likely	50 - 75
Most Likely	> 75

\* Red colour warning does not mean "Red Alert", Red colour warning means "Take Action".

Forecast and Warning for any day is valid from 0830 hours IST of day till 0830 hours IST of next day.

For more details, kindly visit <https://mausam.imd.gov.in> or contact: 011-2434-4599

(Service to the Nation since 1875)

## DEFINITION/CRITERIA

### Rain/ Snow \*

Heavy: 64.5 to 115.5 mm/cm \*  
Very Heavy: 115.6 to 204.4 mm/cm \*  
Extremely Heavy: > 204.4 mm/cm \*

### Heat Wave

When maximum temperature of a station reaches  $\geq 40^{\circ}\text{C}$  for plains and  $\geq 30^{\circ}\text{C}$  for hilly regions  
(a) Based on Departure from normal

Heat Wave: Maximum Temperature Departure from normal  $4.5^{\circ}\text{C}$  to  $6.4^{\circ}\text{C}$ .

Severe Heat Wave: Maximum Temperature Departure from normal  $\geq 6.5^{\circ}\text{C}$

(b). Based on Actual maximum temperature

Heat Wave: When actual maximum temperature  $\geq 45^{\circ}\text{C}$ .

Severe Heat Wave: When actual maximum temperature  $\geq 47^{\circ}\text{C}$ .

(c). Criteria for heat wave for coastal stations

When maximum temperature departure is  $> 4.5^{\circ}\text{C}$  from normal. Heat Wave may be described provided maximum temperature  $\geq 37^{\circ}\text{C}$ .

### Warm Night

When maximum temperature remains  $40^{\circ}\text{C}$

Warm Night: When minimum temperature departure  $4.5^{\circ}\text{C}$  to  $6.4^{\circ}\text{C}$ .

Severe Warm Night: When minimum temperature departure  $> 6.4^{\circ}\text{C}$ .

### Cold Wave

When minimum temperature of a station  $\leq 10^{\circ}\text{C}$  for plains and  $\leq 0^{\circ}\text{C}$  for hilly regions.

(a). Based on departure

Cold Wave: Minimum Temperature Departure from normal  $-4.5^{\circ}\text{C}$  to  $-6.4^{\circ}\text{C}$ .

Severe Cold Wave: Minimum Temperature Departure from normal  $\leq -6.5^{\circ}\text{C}$

(b) Based on actual Minimum Temperature (for Plains only)

Cold Wave: When Minimum Temperature is  $\leq 4.0^{\circ}\text{C}$

Severe Cold Wave: When Minimum Temperature is  $\leq 2.0^{\circ}\text{C}$

(c) For Coastal Stations

When Minimum Temperature departure is  $\leq -4.5^{\circ}\text{C}$  & actual Minimum Temperature is  $\leq 15^{\circ}\text{C}$

### Cold Day

When minimum temperature of a station  $\leq 10^{\circ}\text{C}$  for plains and  $\leq 0^{\circ}\text{C}$  for hilly regions

Based on departure

Cold Day: Maximum Temperature Departure from normal  $-4.5^{\circ}\text{C}$  to  $-6.4^{\circ}\text{C}$ .

Severe Cold Day: Maximum Temperature Departure from normal  $\leq -6.5^{\circ}\text{C}$

### Fog

Phenomenon of small droplets suspended in air and the horizontal visibility  $< 1\text{km}$

Moderate Fog: When the visibility between 500-200 metres

Dense Fog: when the visibility between 50- 200 metres

Very Dense Fog: when the visibility  $< 50$  metres

### Thunderstorm

Sudden electrical discharges manifested by a flash of light (Lightning) and a sharp rumbling sound (thunder)

### Dust/Sand Storm

An ensemble of particles of dust or sand energetically lifted to great heights by a strong and turbulent wind.

### Frost

Ice deposits on ground

Air temperature  $\leq 4^{\circ}\text{C}$  ( over Plains)

### Squall

A strong wind that rises suddenly, lasts for atleast 1 minute.

Moderate: Wind speed 52-61 kmph

Severe: Wind speed 62-67 kmph

Very Severe: Wind speed  $> 67$  kmph

### Sea State

Effect of various waves in the sea over specific area

Rough to very rough: Wind speed 41-62 kmph (22-33 knots) & Wave height 2.5-6 metre

High to very high: Wind speed 63-117 kmph ( 34-63 knots) & Wave height 6-14 metre

Phenomenal: Wind speed  $> 117$  kmph ( $> 63$  knots) & Wave height  $> 14$  metre

### Cyclone

Cyclonic Storm: Wind speed 62-87 kmph (34-47 knots)

Severe Cyclonic Storm: Wind speed 88-117 kmph (48-63 knots)

Very Severe Cyclonic Storm: Wind speed 118-165 kmph (64 - 89 knots)

Extremely Severe Cyclonic Storm: Wind speed 166-220 kmph (90 -119 knots)

Super Cyclone Storm: Wind speed  $> 220$  kmph ( $> 119$  knots)

\* Red colour warning does not mean "Red Alert", Red colour warning means "Take Action".

Forecast and Warning for any day is valid from 0830 hours IST of day till 0830 hours IST of next day.

For more details, kindly visit <https://mausam.imd.gov.in> or contact: 011-2434-4599

(Service to the Nation since 1875)

**Hot and Humid:** When maximum temperatures remain  $3^{\circ}\text{C}$  above normal along with the above normal relative humidity.